

2003 Newell Coach

#646

45' two slides, bath and a half, mid entry with Bode Air Operated Entry Door and roof airs

Detroit Diesel Series 60, 500 HP diesel engine and Allison 6 speed World Transmission

Approximately 103,000 miles, 365 front tire upgrade, Aqua Hot, Fisher & Paykel dish drawer, Amana residential refrigerator, two burner Gaggenau recessed cooktop, Whirlpool stackable washer and dryer.

Center roof air replaced in 2014, awnings are electrically controlled from inside the coach (fabric replaced about 2014), in motion satellite (replaced 2012), upholstery and TV's upgraded in 2011 to 42" front and 32" in bedroom.

Properly maintained by Newell or Newell referred contractors

Currently located in Indio, CA

Contact: gelbhedy@yahoo.com



#646 with slides closed



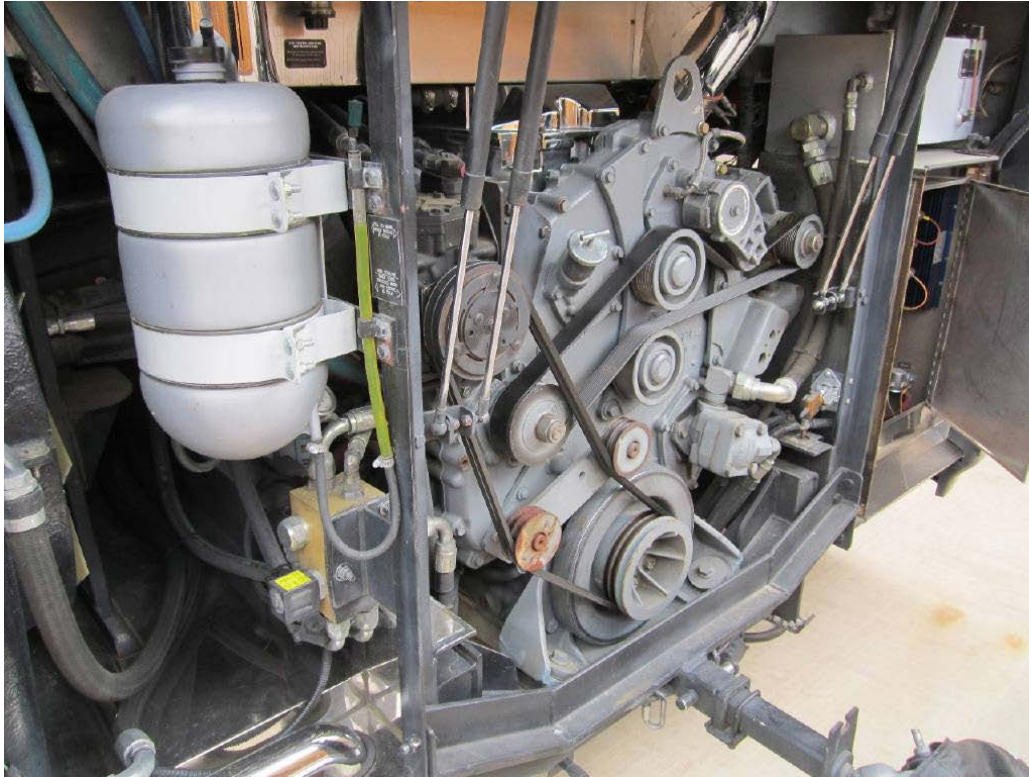
Front and curb side



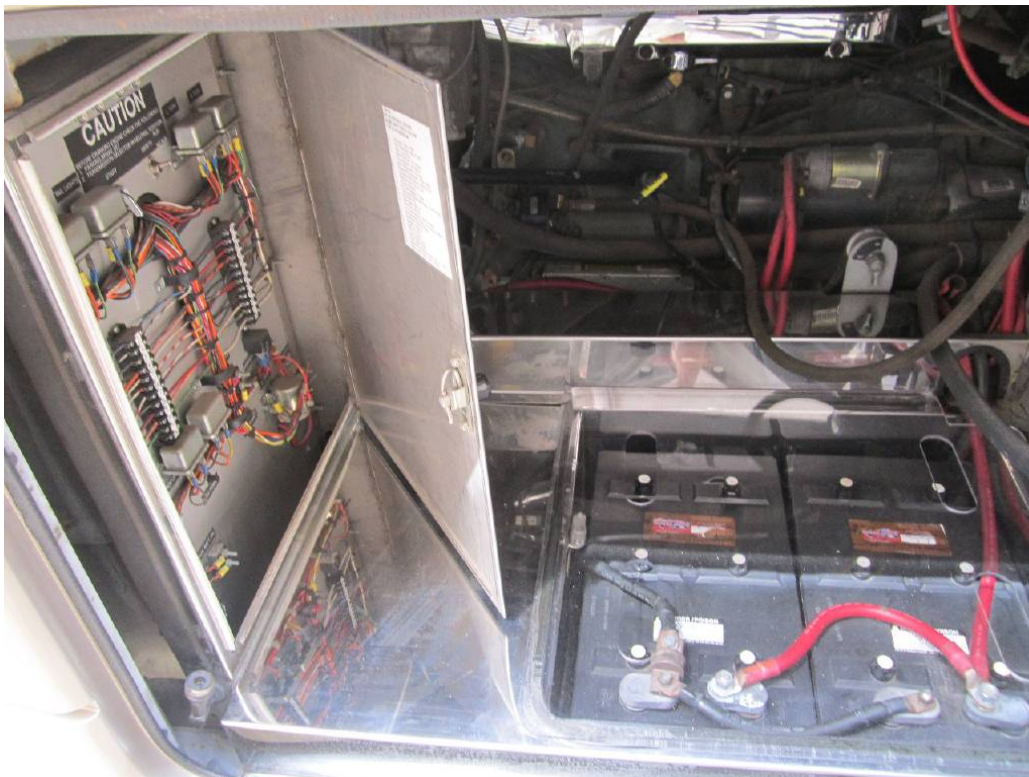
Slides Extended



Rear



Detroit Diesel Series 60 500 HP engine



Electrical panel and chassis batteries



Slide tray and drawers



Generator blower and 12V air compressor



20KW Turbocharged Diesel Generator



HWH system and Howard Power Steering Assist



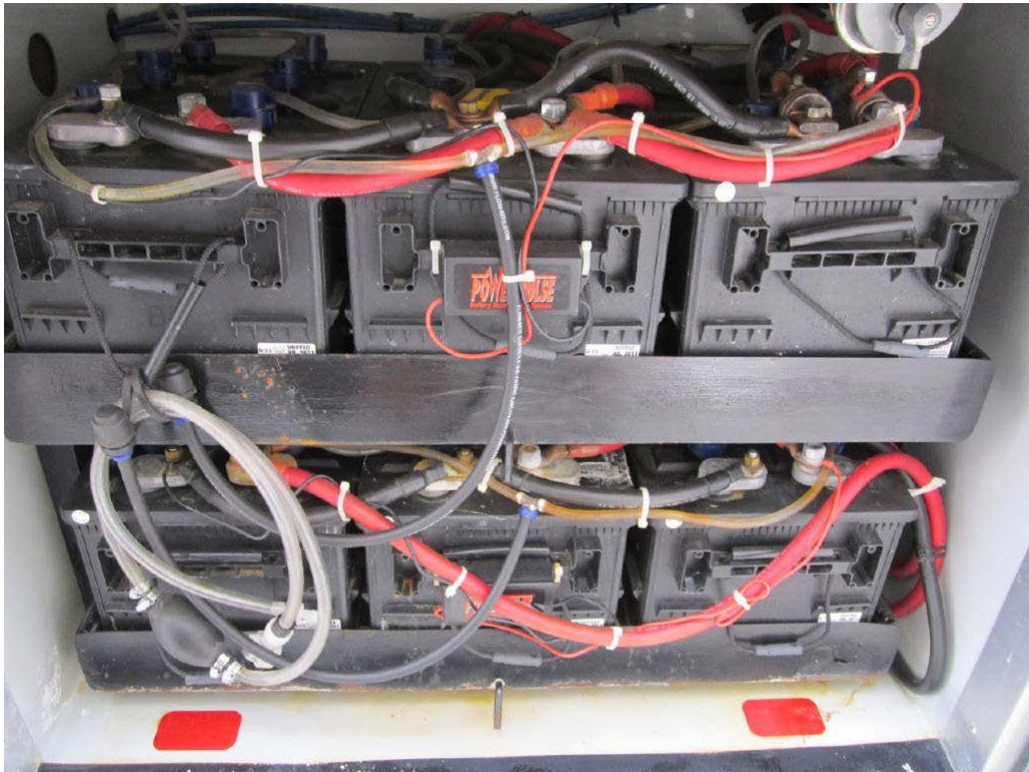
Xantrex inverter



Pass-through bay



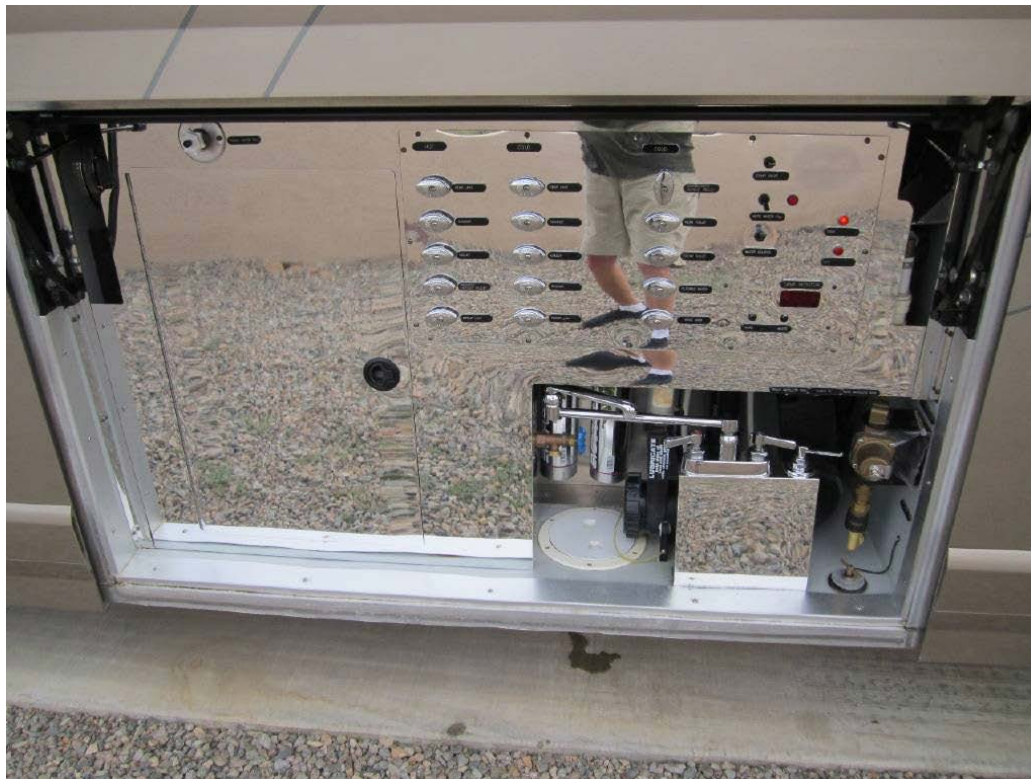
Aqua Hot 240V AC and diesel



Coach batteries six 8-D



12 Volt water pump and 120 Volt water Pump



Wet bay



365/70R22.5 front tire upgrade



Entry steps with phantom sliding screen door



Couch and dinette



Salon Table



Dinette and Galley



Sink and recessed electric cooktop



Dish drawer



Pantry and Residential refrigerator



Half bath



Bedroom



Bedroom TV



Rear bath