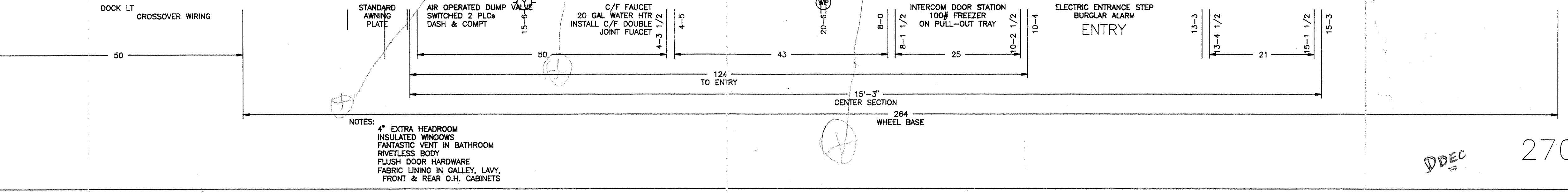


- 8V92TA DDEC ENGINE
  - ENGINE BATTERIES
  - OIL METERING VALVE & RESERVOIR
  - EXHAUST INSULATION
  - 4 BAG TAG AXLE SUSPENSION
- |                     |                       |                              |
|---------------------|-----------------------|------------------------------|
| (S) SWITCH          | (S) TOGGLE SWITCH     | (S) 3-WAY SWITCH             |
| (D) DIMMER SWITCH   | (T) THERMOSTAT        | (H) HEAT&COOL THERMOSTAT     |
| (L) LIGHT           | (A) ASTRO LIGHT       | (B) BULLET LIGHT             |
| (Y) YARD LIGHT      | (SB) SNOWBALL LIGHT   | (A) AISLE LIGHT              |
| (C) CHANDELIER      | (R) 120V RECEPTACLE   | (W) WEATHER-PROOF RECEPTACLE |
| (12) 12V RECEPTACLE | (I) INVERTED CIRCUIT  | (8 RF) 8W RECESSED LIGHT     |
| (S) SPEAKER         | (+T) TV ANTENNA       | (15 RF) 15W RECESSED LIGHT   |
| (E) EXHAUST FAN     | (PH) PHONE RECEPTACLE | (TV) TV / NT RECEPTACLE      |



41'-3" OAL 102" WIDE

NEWELL COACH CORP.  
 P.O. BOX 1185 HWY. 89 N.  
 MIAMI, OKLAHOMA 74355  
 PH. (918)542-3344 FAX (918)542-2028

BY: [Signature] REVISION: 8/7/90 DATE: 8/13/90  
 TITLE: FLOORPLAN 1N9413XB0M1011270 SCALE: 1"=1'  
 DESIGN FOR: TEX & MAE MARTIN

120V AUTOMATIC AIR COMPRESSOR RAISED HEADLIGHTS

DDEC 270

888-3639305